



Stanmore Hill

Stanmore

£475,000

A large three bedroom, first floor flat available with lots of period features with Davidson Frost-Wellings.

The flat has a bay windowed reception room, open plan with an eat-in kitchen with dual aspect and high ceilings allowing for lots of natural light. There is a large master bedroom with en suite shower room, a further double bedroom and a third single bedroom, plus a welcoming entrance hall, utility room and storage.

There is also a communal roof terrace offering stunning views over London.

Leasehold with approximately 163 years remaining.
Peppercorn ground rent.
Ad hoc service charges.
Harrow Council tax band C.

- Three bedrooms
- Two bathrooms
- Over 900 sq ft
- First floor
- Period features
- Long leasehold

Viewing

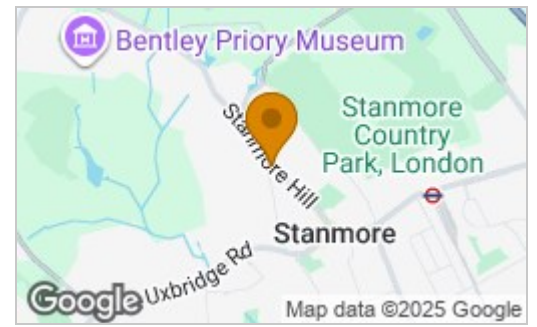
Please contact our Davidson Frost-Wellings Office on 020 8954 8806 if you wish to arrange a viewing appointment for this property or require further information.



Floor Plan

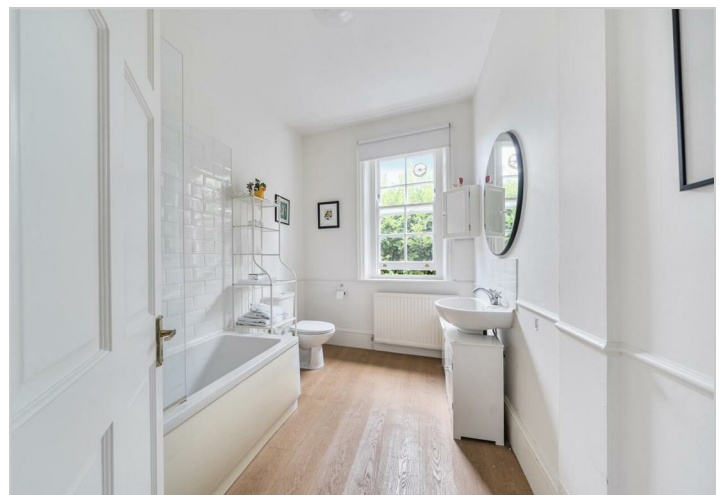


Area Map



Energy Efficiency Rating

	Current	Potential
Very energy efficient - lower running costs		
(92 plus) A		
(81-91) B		
(69-80) C		
(55-68) D	68	76
(39-54) E		
(21-38) F		
(1-20) G		
Not energy efficient - higher running costs		
England & Wales	EU Directive 2002/91/EC	



These particulars, whilst believed to be accurate are set out as a general outline only for guidance and do not constitute any part of an offer or contract. Intending purchasers should not rely on them as statements of representation of fact, but must satisfy themselves by inspection or otherwise as to their accuracy. No person in this firm's employment has the authority to make or give any representation or warranty in respect of the property.